



# Strategic Exploration in Saskatchewan

Investor Presentation

TSXV: RBZ

[aryaresources.com](http://aryaresources.com)

3/30/26

# Disclaimer

No stock exchange, securities commission, or other regulatory authority has approved or disapproved the information contained in this presentation. This presentation includes certain “forward-looking statements.” All statements other than statements of historical fact included in this presentation, including, without limitation, statements regarding potential mineralization and reserves, exploration results, and future plans and objectives of the Company, are forward-looking statements that involve various risks and uncertainties. There can be no assurance that such statements will prove to be accurate, and actual results and future events could differ materially from those anticipated in such statements. Important factors that could cause actual results to differ materially from the Company's expectations include, among others, risks related to operations, the actual results of current exploration activities, conclusions of economic evaluations, and changes in project parameters as plans continue to be refined, as well as future prices of the metals.

All currency is in Canadian dollars unless otherwise stated.

Kevin Wells, P.Geo., an independent qualified person, has reviewed, verified and approved the contents of this document.

The tonnage and grade are historical (non-compliant with National Instrument 43-101), based on prior data and reports prepared by the previous operators. The historical estimates are not current and do not meet the standards prescribed by NI 43-101. They provide an indication of the potential of the properties and are relevant to ongoing exploration and evaluation. Sources: SMDI#2065 Saskatchewan Mineral Database Identification Number.

# 01

# Who we are

# Share Structure (As of February 27 , 2026)

Issued and Outstanding Listed Shares (November 21, 2025)	38,819,829
NFT Financing* (\$0.30 Share Jan, 12/2026)	1,413,334
FT Financing** (\$0.33 Share Dec 24/2026)	3,696,971
<b>Issued and Outstanding Listed Shares***</b>	<b>43,930,134</b>
Warrants (\$0.25 Expiring June 03/2027)	5,100,000
B-Warrants (\$0.25 Expiring June 03/2027)	432,120
B-Warrants (\$0.25 Expiring Dec 24/2027)	285,695
Options***	2,720,000
<b>Fully Diluted</b>	<b>52,467,949</b>
<b>Market Cap</b>	<b>\$25.0 M</b>
<b>Insider Ownership</b>	<b>23.9%</b>



\*NFT Financing = Non-Flow-Through Financing  
 \*\*FT Financing = Flow-Through Financing  
 \*\*\*Options: 1,000,000 @ \$0.30; 650,000 @ 0.10;  
 310,000 @ \$0.06; 510,000 @ \$0.25

# Management & Directors

## Rasool Mohammad

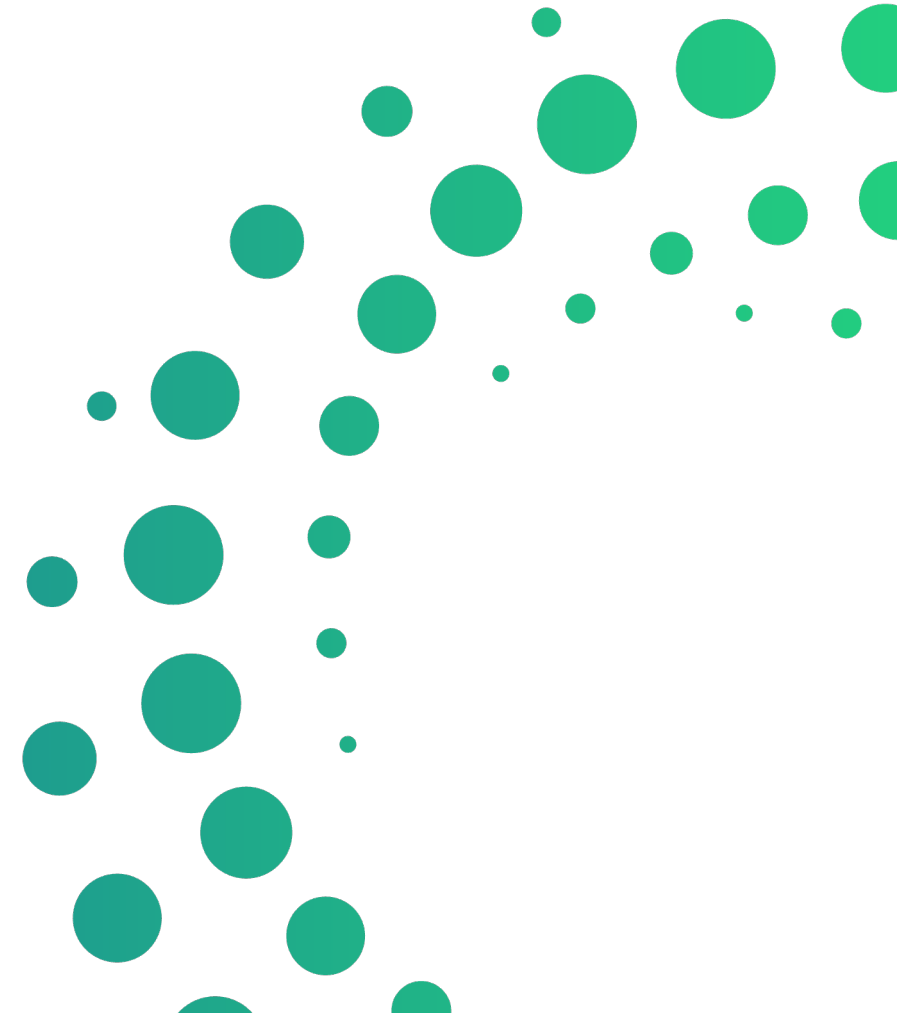
President, Chief Executive Officer and Director



Mr. Mohammad has more than 30 years of combined education and hands-on experience in the Energy and Mining Industries in Canada, the U.S., and South America. He has his Bachelor of Science in Mining Engineering (1991) from UET, Peshawar, Pakistan. He was a founder, director, and Chairman of the Board of Comstock Metals Ltd (CSL.V) from Mar 2011 to August 2019.

With more than 20 years of experience advancing projects from discovery to production he has a proven track record of building shareholder value through technical expertise, strategic acquisitions, and disciplined project execution, includes multi-million-dollar EBITDA production and high-grade gold discoveries in Canada and the U.S. addition to his exploration achievements, Mr. Mohammad has successfully raised millions in equity financings, built strong capital markets relationships, and negotiated strategic partnerships to accelerate project development. His leadership is defined by a hands-on approach, combining geological insight with pragmatic business execution, enabling him to deliver results across multiple commodities, including gold, copper, nickel, cobalt, and industrial minerals.

Mr. Mohammad was also a founder, director, CEO and COO of La Ronge Gold/Select Sands Corp (SNS.V) from May 2011 to August 2019.



# Management & Directors

## Kevin Wells, P.Geo.

Project Geologist / QP



Mr. Wells is a career-oriented Senior Geologist / Operations Manager who graduated from Laurentian University (Sudbury, ON) in 1994 with a Bachelor of Science (Honours) degree in Geology. Over his 43-year career he has been actively involved in mineral exploration and resource estimation on numerous magmatic nickel-copper-PGE, VMS, Pb-Zn SEDEX and early in his career “lode Au” projects throughout Canada, the USA and China. Mr. Wells was fortunate to be a junior member (Geological technician) early in his career with the exploration team that discovered the Musselwhite Au Mine in Northern Ontario.

## Oliver Foeste, CPA, CA

Chief Financial Officer



Mr. Foeste, CPA, is the Founder of Invictus Accounting Group LLP and holds a Bachelor of Commerce from the University of Victoria. He brings extensive executive, finance, and public company compliance experience.

# Director

## Peter Deacon

Director



Peter Deacon brings a strong entrepreneurial spirit and a get-it-done attitude to the board of Arya. Peter has a BBA in Business Management from Northwood University (West Palm Beach, FL).

Peter is the CEO of River Birch Global Water Inc. He is the CEO of Deacon Global Capital Corporation, a hybrid entity combining the functions of a merchant bank/private equity group. Mr. Deacon previously worked with Dundee Securities (formerly Deacon Capital Corporation), where he helped manage approximately \$400 million for a select group of private clients. The Deacon Family has a long and proud history in the Canadian Investment landscape, dating back to its great-grandfather's founding of F.H. Deacon and Company in 1897.

## Andrew Cormier, CPA

Director



Mr. Cormier is Chief Financial Officer of River Birch Global Water Inc. and a director on the Board. He is responsible for managing global financial affairs, including finance, accounting, capital, treasury, and financial regulation. Previously, he held senior accounting and finance roles with leading insurance companies across multiple jurisdictions. Mr. Cormier is a Canadian CPA having completed his public accounting experience with PWC Bermuda in audit and assurance services for insurance and reinsurance companies.

# Director

## Roger March, P.Geo.

Director



Mr. March has over 30 years of progressive exploration and management experience, specializing in advanced exploration programs. Currently he is Principal Geoscientist and QP for Foran Mining Corporation, following 10 years as VP Exploration, where he is part of the team responsible for significant resource growth and the completion of prefeasibility and Feasibility level studies for the McIlvenna Bay VHMS deposit (under construction) located in the Flin Flon Greenstone Belt in Saskatchewan and recipients of the 2025 AME Colin Spence Award for excellence in global mineral exploration. Previously, Mr. March spent 11 years with Cumberland Resources Ltd., where he was part of the team responsible for the completion of prefeasibility and feasibility level studies for the Meadowbank Gold Project located in the Canadian arctic (acquired by Agnico-Eagle Mines Ltd. in 2007), including resource increases from 0.8 million to over 4 million ounces of gold. Mr. March is a Professional Geoscientist with the PEGNL and holds a B.Sc. (Hons.) degree from Memorial University of Newfoundland.

## Paul Sorbara

Director



Mr. Sorbara, Founder, Director, and President of Golden Goliath Resources (GNG.V), completed his M.Sc. at the University of Toronto in 1979, studying collapsed caldera structures in Canada's Northwest Territories. Mr. Sorbara was one of the first Canadians to venture into Mexico, where he started a private Mexican exploration company, Minera Delta S.A. de C.V., which he took public as Golden Goliath Resources Ltd. Paul studied Iron Formations in Graduate School and was part of Cominco's Slave Province iron-formation gold team.

# 02

# The projects

# Why explore in Saskatchewan, Canada?

## Highlights

- In a Tier-1 Mining Jurisdiction (per Fraser Institute 2025)
- Nearby gold mines have been in production since 1991
- Excellent Accessibility: Year-round highway access, power supply, and workforce
- Exploration Potential: Several historic gold & base metal zones identified; drilling needed to confirm and expand
- Saskatchewan has a history of mining development and production in many commodities



**“It's time to **unleash** Saskatchewan's  
world-class resource sector and  
fully realize **our economic potential.**”**

Colleen Young

Minister of Energy and Resources

# Unlocking Mineral Wealth

## Wedge Lake

GOLD

2025/26 Drill program: focus on high-priority zones to advance underexplored gold targets using modern technology

## Dunlop Deposit

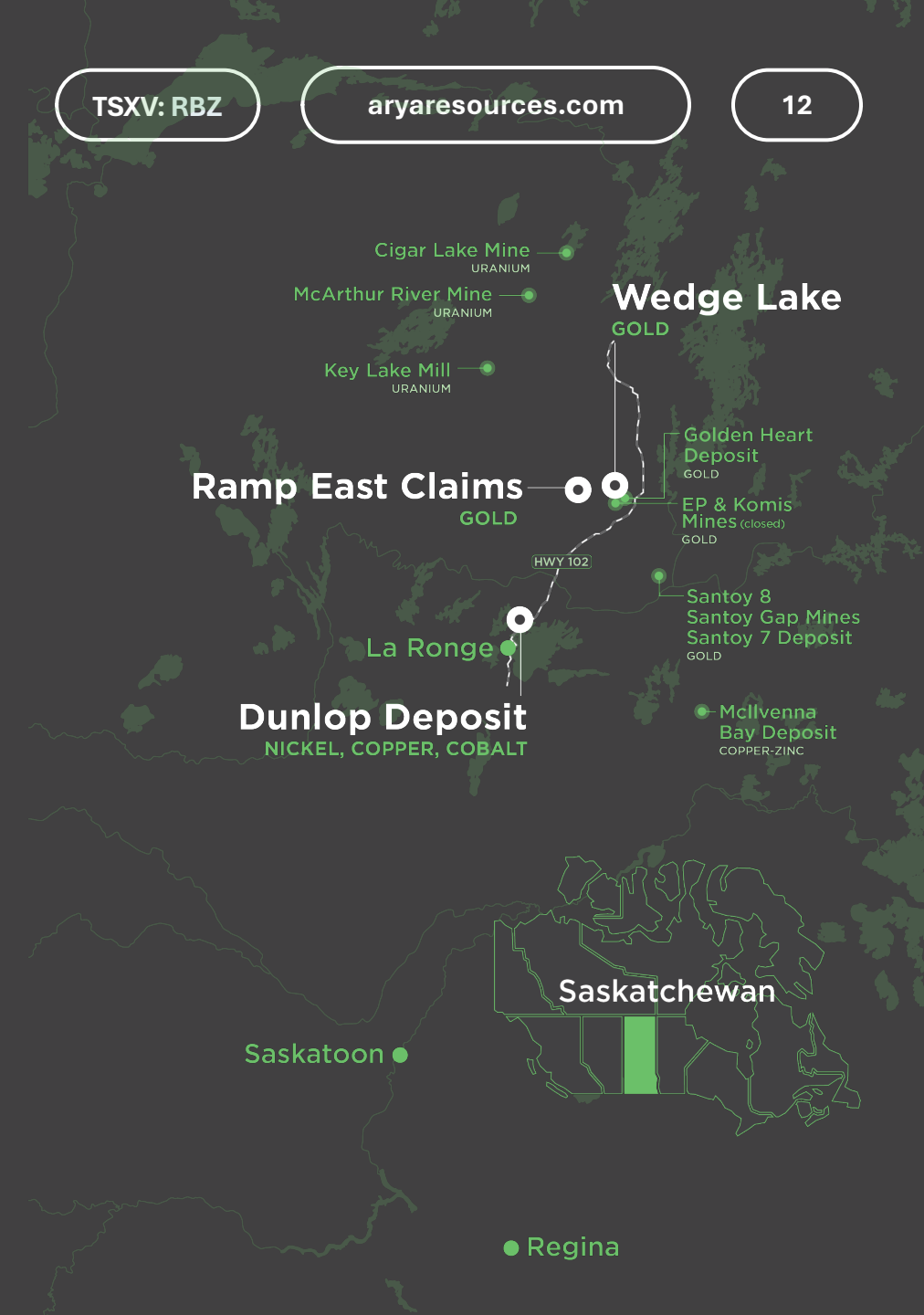
NICKEL, COPPER, COBALT

Follow-up exploration drill program to 2023 results

## Ramp East Claims

GOLD / BASE METALS

Strategic acquisition on-strike of a recent gold/copper discovery



# Wedge Lake Gold Property

**Ownership:**  
Option to earn 100% from North-Sask Ventures Ltd.

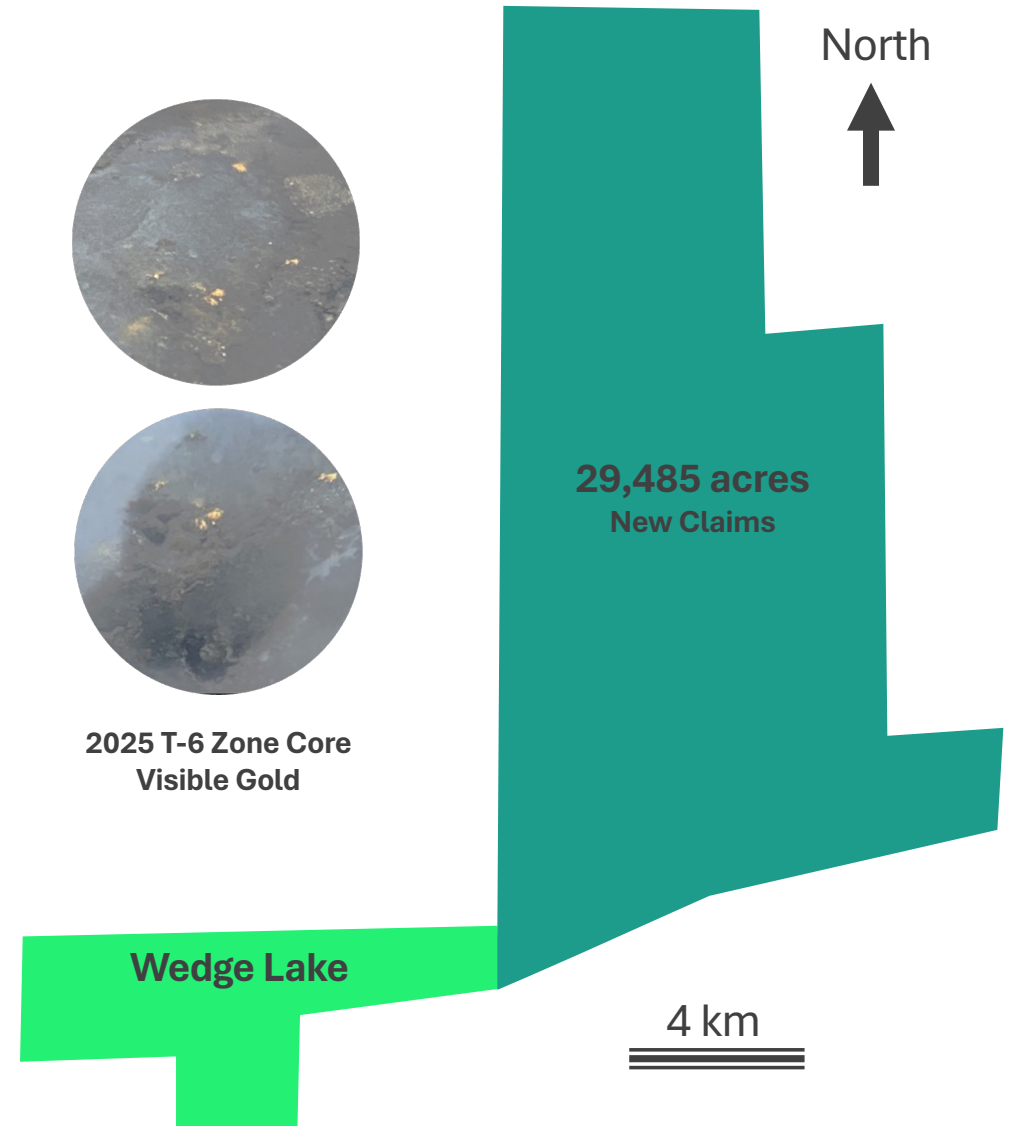
**\$105,000 Cash / 5 years**  
\$55,000 PAID

**\$1,000,000 Exploration Expenditures / 5 years**  
\$1,000,000 SPENT TO DATE

**1,000,000 Common Shares / 5 years**  
500,000 SHARES ISSUED

**2.5% NSR**  
BUYOUT 1% AT \$1,000,000

**Current mineral claims:**  
**32,459 acres (13,136 ha)**



# Wedge Lake Gold Property

## Zones/Showings

Multiple gold occurrences over 3,900 m of strike length

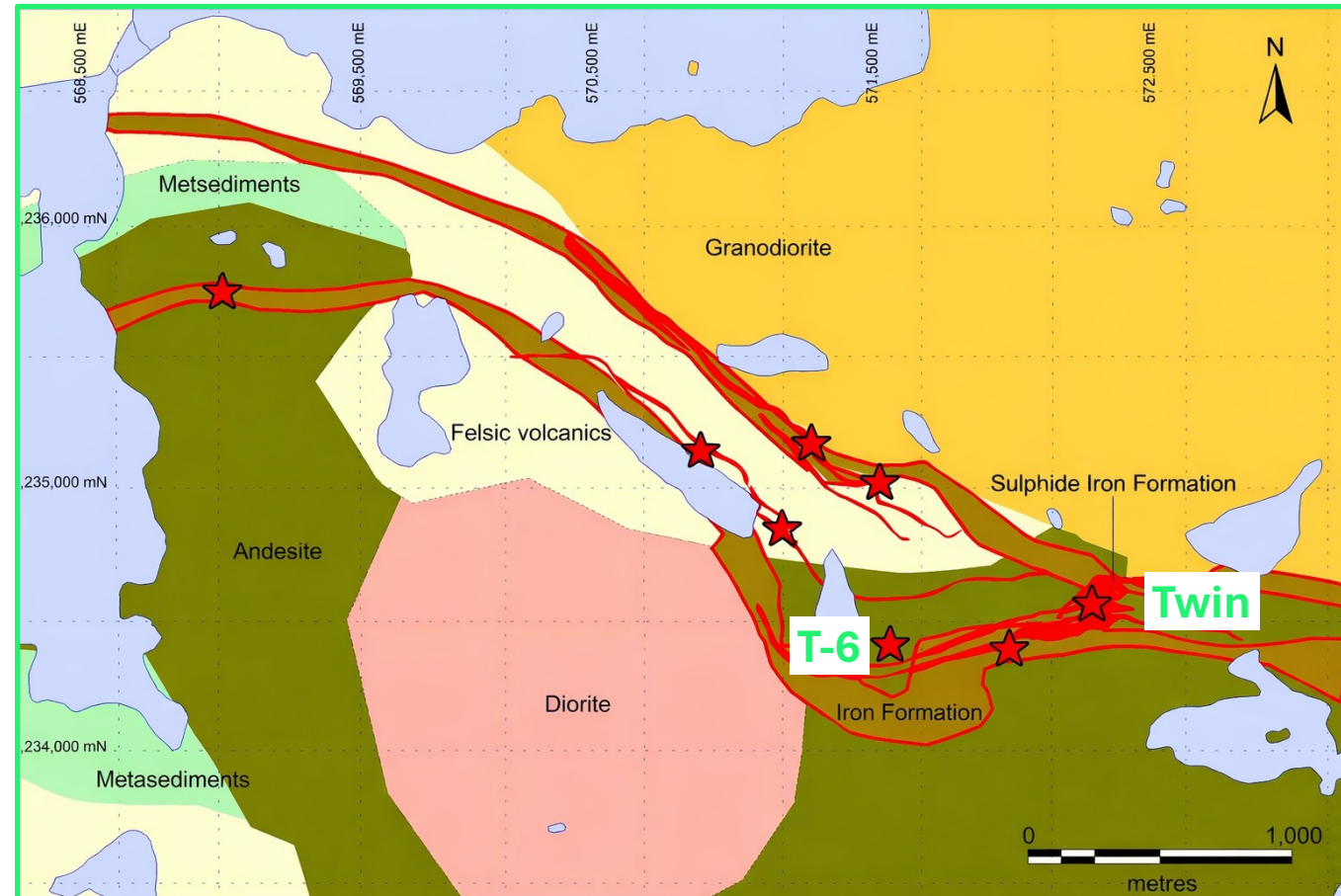
○ **1983-1984 Drilling of the Twin Gold Zone:**  
 \*Historic Resource 101,250 Oz Au grading 5.14 g/t Au  
 (Resource Calculation by: Giant Yellowknife Mines Ltd. – 1984)

○ **T-6 /Twin Zone 2025 Drilling:**  
 See next pages for the 2025 Drill Results

○ **T-12 Zone:**  
 7.7 m near surface -massive sulphide zone

The Twin Zone hosts gold-only mineralization within banded iron formation (BIF). BIF-hosted gold deposits are a recognized style of deposit, with Canadian examples including the Lupin and Meadowbank mines, the Meliadine gold district (Nunavut), and the

Musselwhite mine (Ontario). \*The above quoted resource estimate for the Twin Zone is historical in nature and based on prior data and reports prepared by previous operators and are not being treated as current. A qualified person within the meaning of National Instrument 43-101 has not completed sufficient work to classify this historic resource as current; additional work including re-surveying of drill holes, re-logging and drill core QAQC would be required to verify these results.

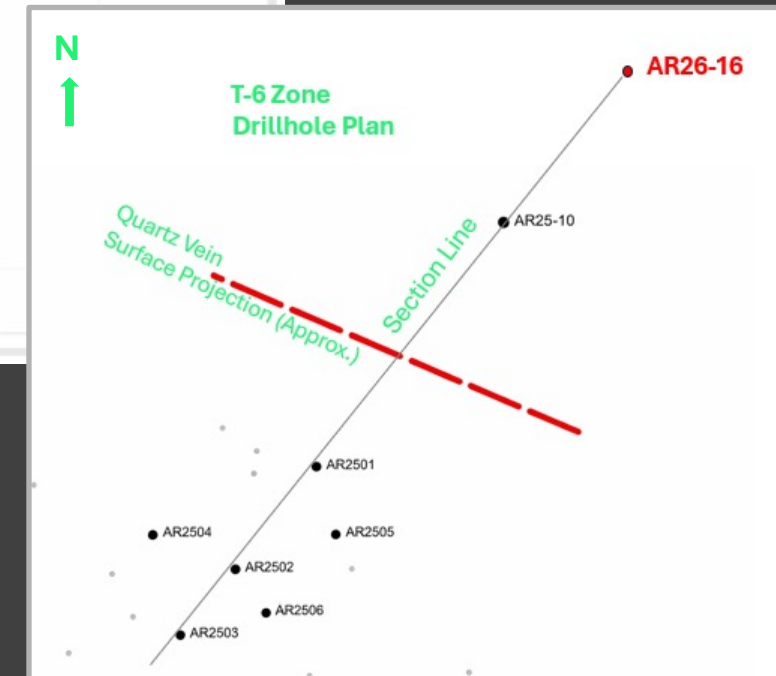
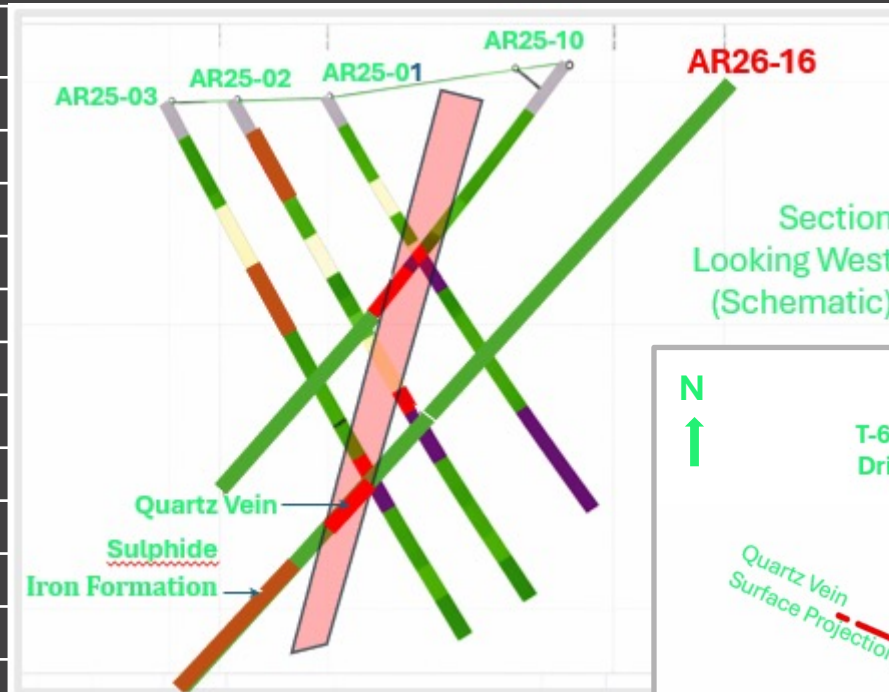


# Wedge Lake Gold Property

## 2025 T-6 Zone Drill Result

### T-6 Zone: Significant Drill-Hole Intersections

Hole Number	From (m)	To (m)	Core Length (m)	Au (g/t)
AR25-01	32.55	34.76	2.21	10.77
Including	34	34.76	0.76	14.1
AR25-02	55.02	57.5	2.48	1.97
Including	56.75	57.5	0.75	3.88
AR25-03	68.44	70.24	1.8	24.46
Including	69.34	70.24	0.9	48.9
AR25-04	No significant values			
AR25-05	36.15	37.35	1.2	35.28
Including	36.75	37.35	0.6	69.9
AR25-06	53.15	54.28	1.13	16.2
Including	53.15	53.75	0.6	27.9
AR25-10	41.7	47.54	5.84	21.59
Including	43.48	47.54	4.06	30.45
and	45	46.5	1.5	59.54
and	45	45.6	0.6	107.6



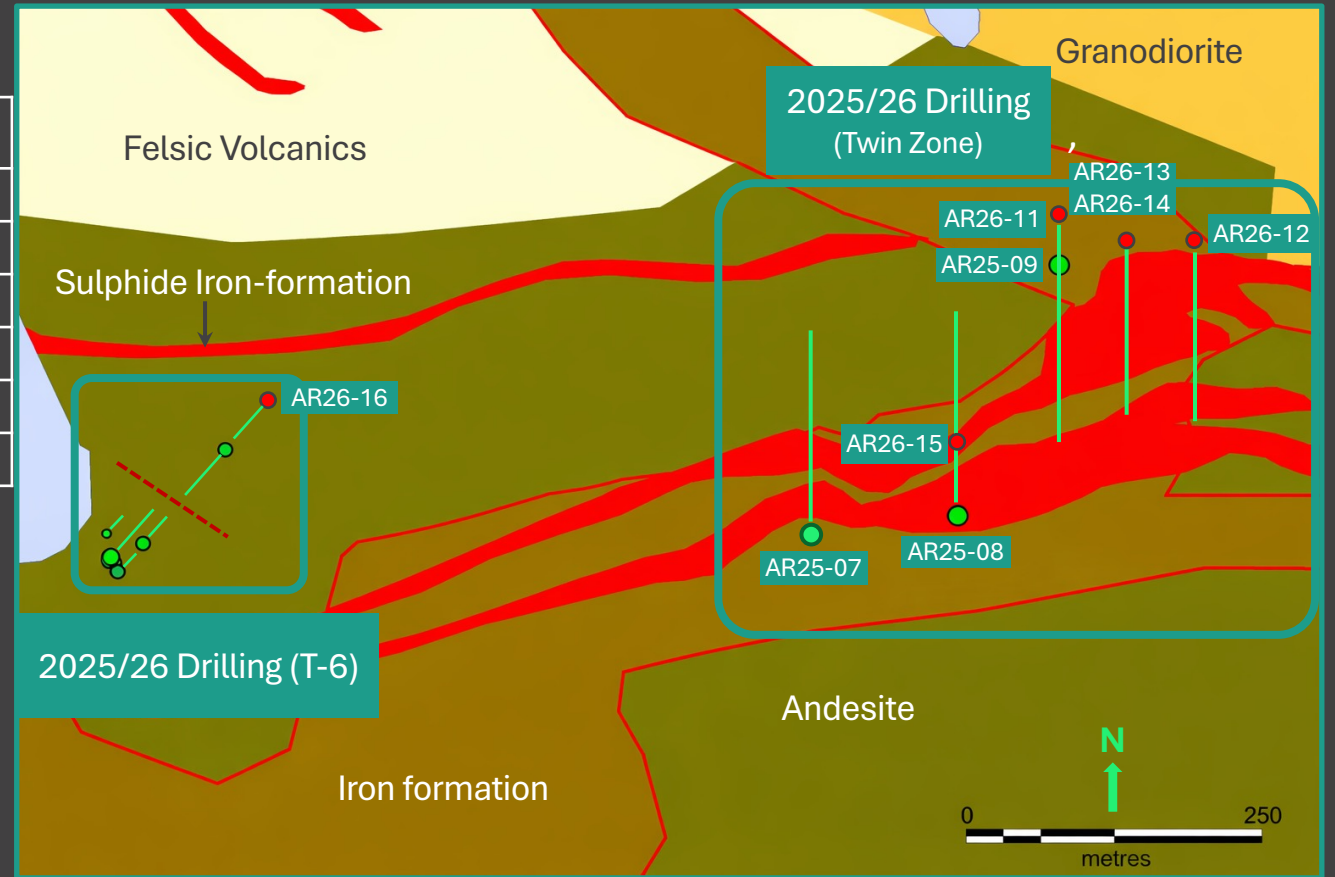
# Wedge Lake Gold Property

## Zones/Showings

### T-6 Zone: Significant Drill-Hole Intersections

Hole Number	From (m)	To (m)	Core Length (m)	Au (g/t)
AR25-07	142.05	146.00	3.95	6.19
AR25-08*	8.55	78.00	69.45	0.44
AR25-09	76.50	120.50	44.00	3.86
Including	89.00	105.00	16.00	9.90
and	94.60	98.40	3.80	26.14

\*True thickness/widths of mineralization is unknown.



# Dunlop Deposit Ni, Cu & Co

**Ownership: 100%**

## Shares

**400,000 common shares**

conditional upon completion of a NI 43-101 report

**600,000 common shares**

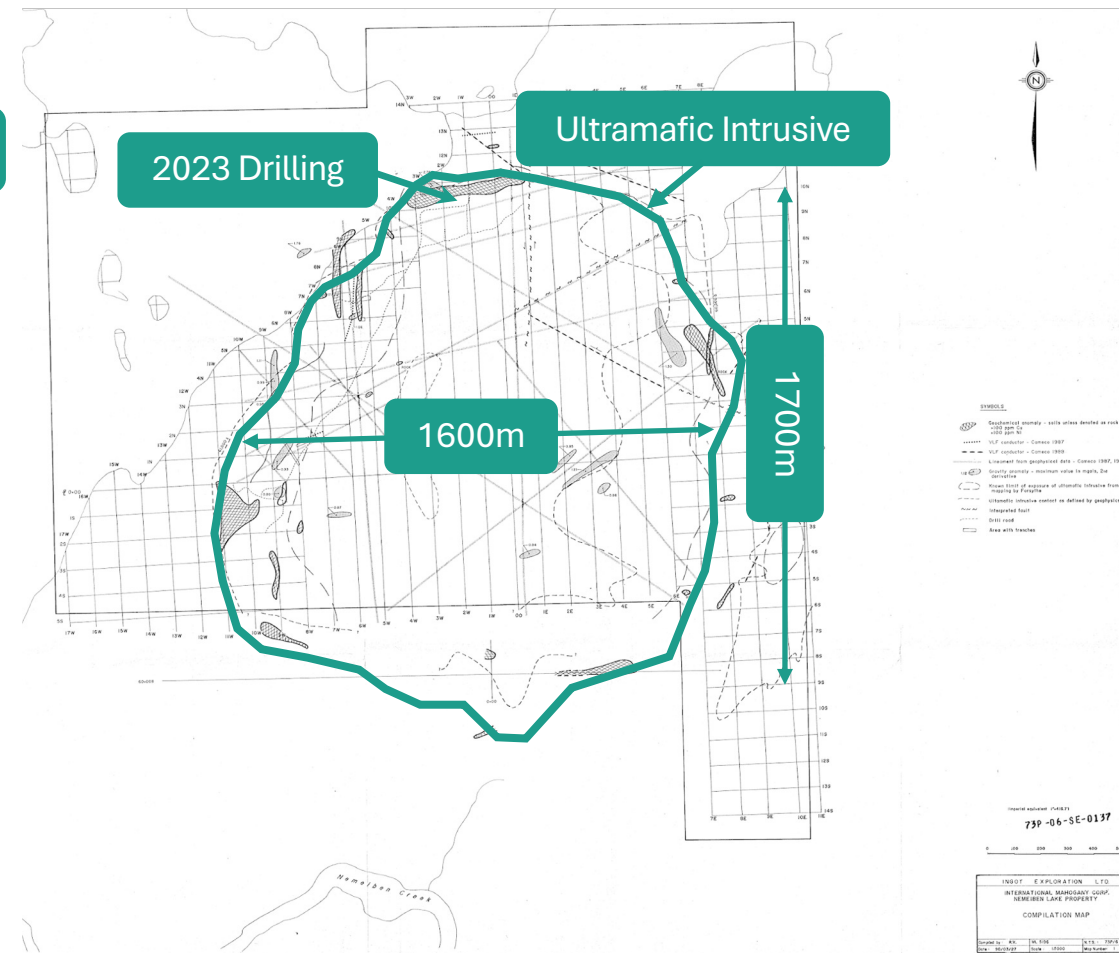
conditional upon completing a preliminary economic assessment

**Work Commitment: \$250,000 (completed)**

3.0% NSR – Buyout 2.5% at \$2,000,000

**Current mineral claims:**

**4,059 acres (1,643 ha)**



# Dunlop Deposit

## Confirmation drilling by Arya 2023

### AR 23-003 Intersected:

136 m of 0.18% Cu  
0.34% Ni  
175 g/t Co

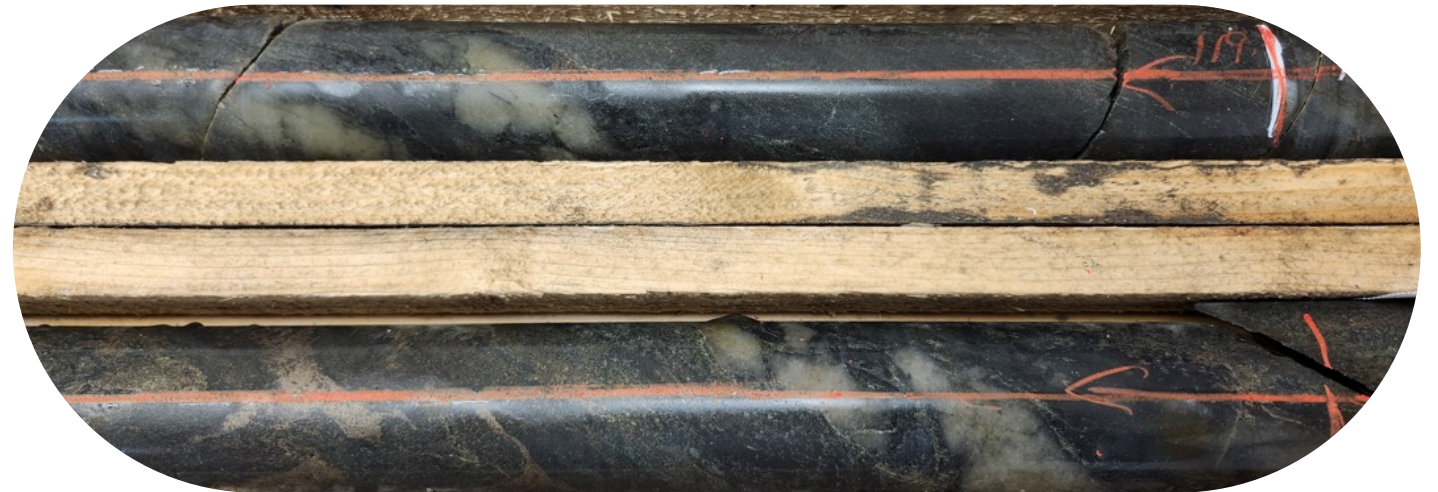
### AR 23-008 Intersected:

36.5 m of 0.35% Cu  
0.62% Ni  
247 g/t of Co

### AR 23-005 Intersected:

67 m of 0.20% Cu  
0.39% Ni  
176 g/t of Co  
(including 9.7 m of 3.37% CuEq)

Copper (Cu)  
Nickel (Ni)  
Cobalt (Co)



# Ramp East Claims

## Current Claims

**Ownership: Option to earn 100%**

**\$100,000 in cash over a 24-month period**  
\$25,000 PAID

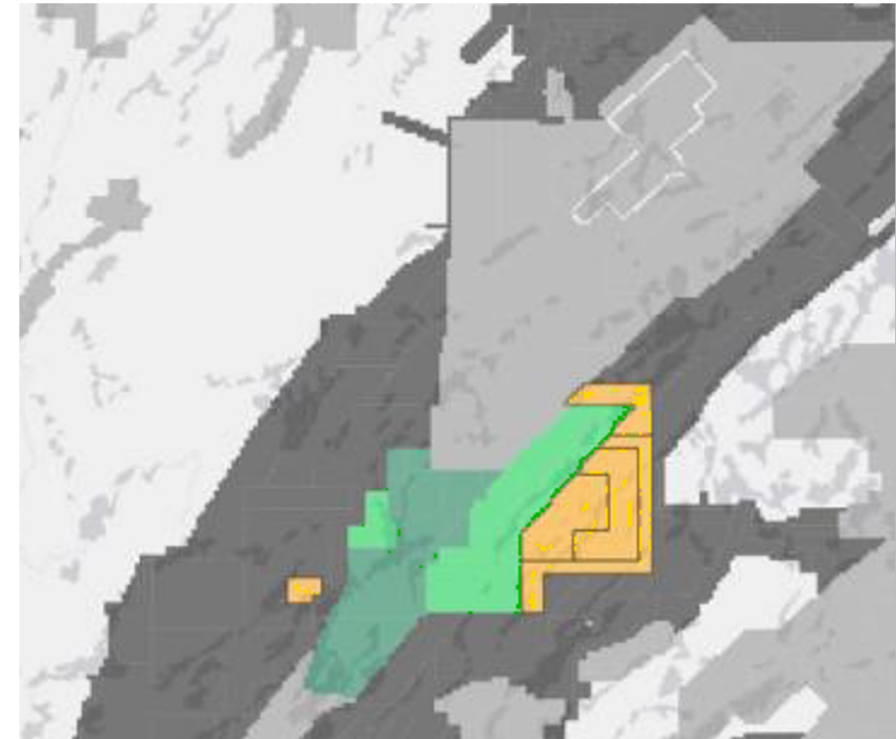
**1,500,000 shares over a 24-month period**  
500,000 ISSUED

**2.0% Net Smelter Return (NSR) royalty, of which  
1.5% is purchasable at any time for \$1,500,000**

**Current mineral claims:**  
**38,926 acres (15,753 ha)**

## Current Claims

● Arya Ramp East Claims    ● Ramp Metals Claims



# Ramp East Claims

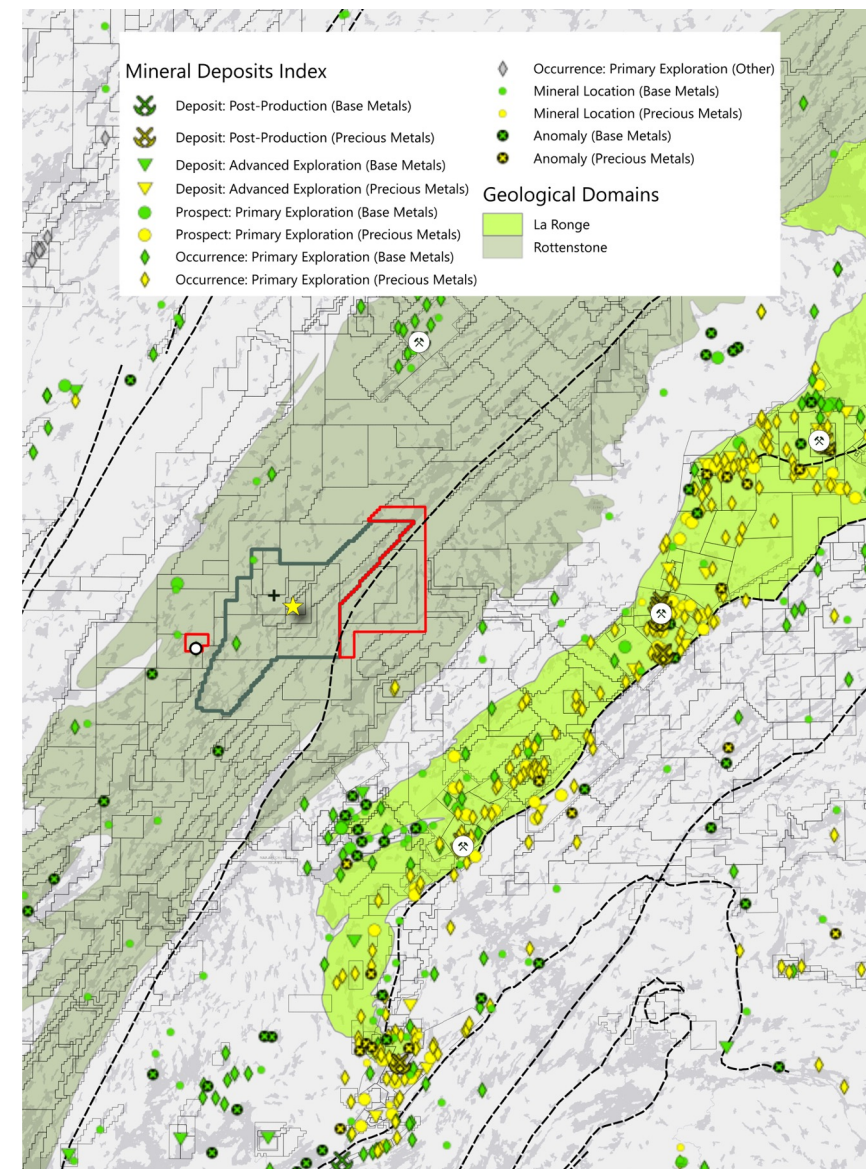
## Proposed Work Programs

Fly a fixed-wing airborne geophysical survey to provide high-resolution geophysical data over the granodiorite-quartz-diorite migmatite complex

Systematic outcrop mapping to better constrain the geology around the Howard Lake shear, a deep-seated NE-SW structure with no recorded historical gold exploration

Complete till sampling and HMC (Heavy Media Concentrate) for gold grain count

“While the La Ronge gold belt has many past and present gold producers, until Ramp Metal’s discovery, the Rottenstone domain was considered a base-metal-only district. We must determine if the prospectivity of the La Ronge gold belt mirrors itself to the west.”



# 03

# Why invest?

# Why Invest in Arya Resources?



Photo: 2025 Twin Zone Mineralization Core Photo



## Strong Leadership

Experienced team with a proven track record in exploration and development across the Americas.



## High-Potential Projects

Gold focus with exposure to copper, nickel, and cobalt in a mining-friendly jurisdiction.



## Previous Development

Historical work at Wedge Lake and Dunlop confirms resource potential.



## Greenfields Opportunity

Newly acquired claims next to Wedge Lake, Ramp East and Dunlop provide Greenfield discovery opportunities.



## Market Position

Low share float and strong insider ownership.



## Expansion Plans

Aggressive exploration, land acquisitions, and growth strategy.



## Current Work Programs

Drilling to expand Twin / T-6 Zones along strike & depth

# Contact us

850 West Hastings Street  
Suite 450  
Vancouver, BC V6C 1E1

**Arya Resources Ltd.**

Rasool Mohammad, CEO  
E: rasool@aryaresourcesltd.com  
T: (604) 868-7737

**CHF Capital Markets**

Cathy Hume, CEO  
E: cathy@chfir.com  
T: (416) 868-1079 x 251



[@AryaResourcesLtd.](#)



[@ARYARESOURCES](#)



[@ARYARESOURCES](#)



[@AryaResourcesLtd.](#)

